

KILROY

Sustainability at a Glance

“Sustainability is an integral part of our business strategy and company culture. Our approach creates long-term value and fosters meaningful engagement with our employees, our existing and prospective tenants, the communities we serve, and our shareholders.”

— Angela Aman,
Chief Executive Officer, Kilroy

Building Certifications

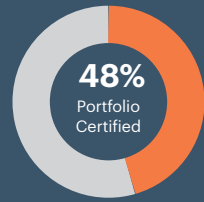
LEED
Certifications



ENERGY STAR
Certifications



Fitwel
Certifications



Diversity & Inclusion

At Kilroy we are committed to recruiting and developing a diverse workforce and promoting inclusion. Our workforce is over 50% female and over 40% multicultural, a meaningful reflection of the diverse communities in which we operate. We will continue on this journey toward building a diverse, and inclusive workplace, cultivating a company culture that makes a positive difference in our employees' lives.



Community Engagement

Our employee volunteerism and philanthropy programs are a core part of our culture. We focus on three key areas: 1) Health, 2) Community Service, and 3) Community Development. These priorities were informed by a review of our long-standing philanthropic initiatives and the causes that have been most meaningful to our stakeholders. We also assess current and emerging community needs where we live and operate to identify where Kilroy can make the greatest long-term impact.

Sustainable & Healthy Building Features

Kilroy uses a variety of building design and operational strategies to positively influence the environmental and social impacts of our portfolio. The following graphic highlights some of the strategies featured across our portfolio.

Energy & Carbon

- 1 Energy efficient lighting
- 2 Onsite solar electricity generation
- 3 Onsite battery storage
- 4 Energy efficient HVAC systems
- 5 All-electric buildings to reduce fossil fuel consumption

Water

- 6 Drought-tolerant landscaping and smart irrigation methods
- 7 Captured and reclaimed water used for irrigation
- 8 Low flow fixtures that reduce water consumption
- 9 Water leak detection

Waste

- 10 Waste diversion with recycling, compost, and e-waste

Biodiversity

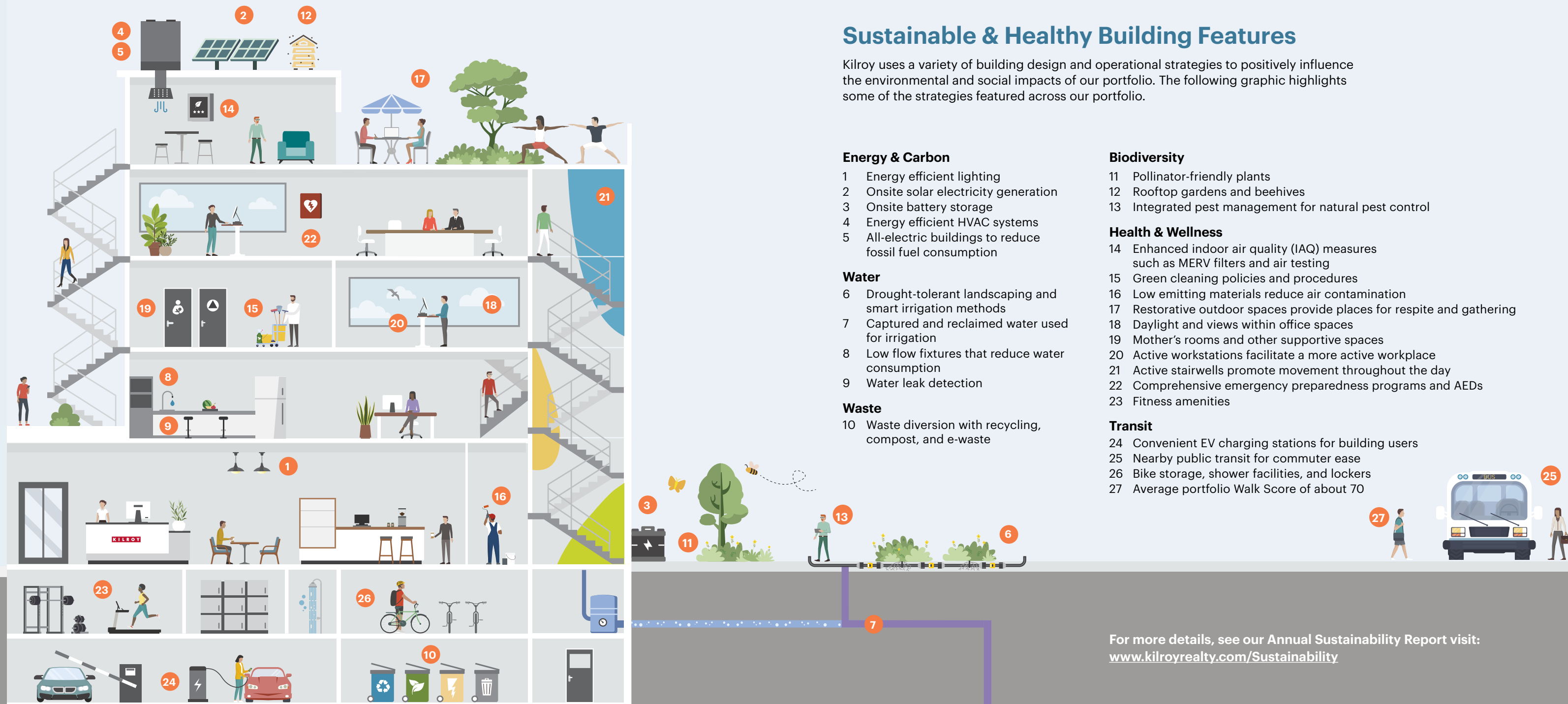
- 11 Pollinator-friendly plants
- 12 Rooftop gardens and beehives
- 13 Integrated pest management for natural pest control

Health & Wellness

- 14 Enhanced indoor air quality (IAQ) measures such as MERV filters and air testing
- 15 Green cleaning policies and procedures
- 16 Low emitting materials reduce air contamination
- 17 Restorative outdoor spaces provide places for respite and gathering
- 18 Daylight and views within office spaces
- 19 Mother's rooms and other supportive spaces
- 20 Active workstations facilitate a more active workplace
- 21 Active stairwells promote movement throughout the day
- 22 Comprehensive emergency preparedness programs and AEDs
- 23 Fitness amenities

Transit

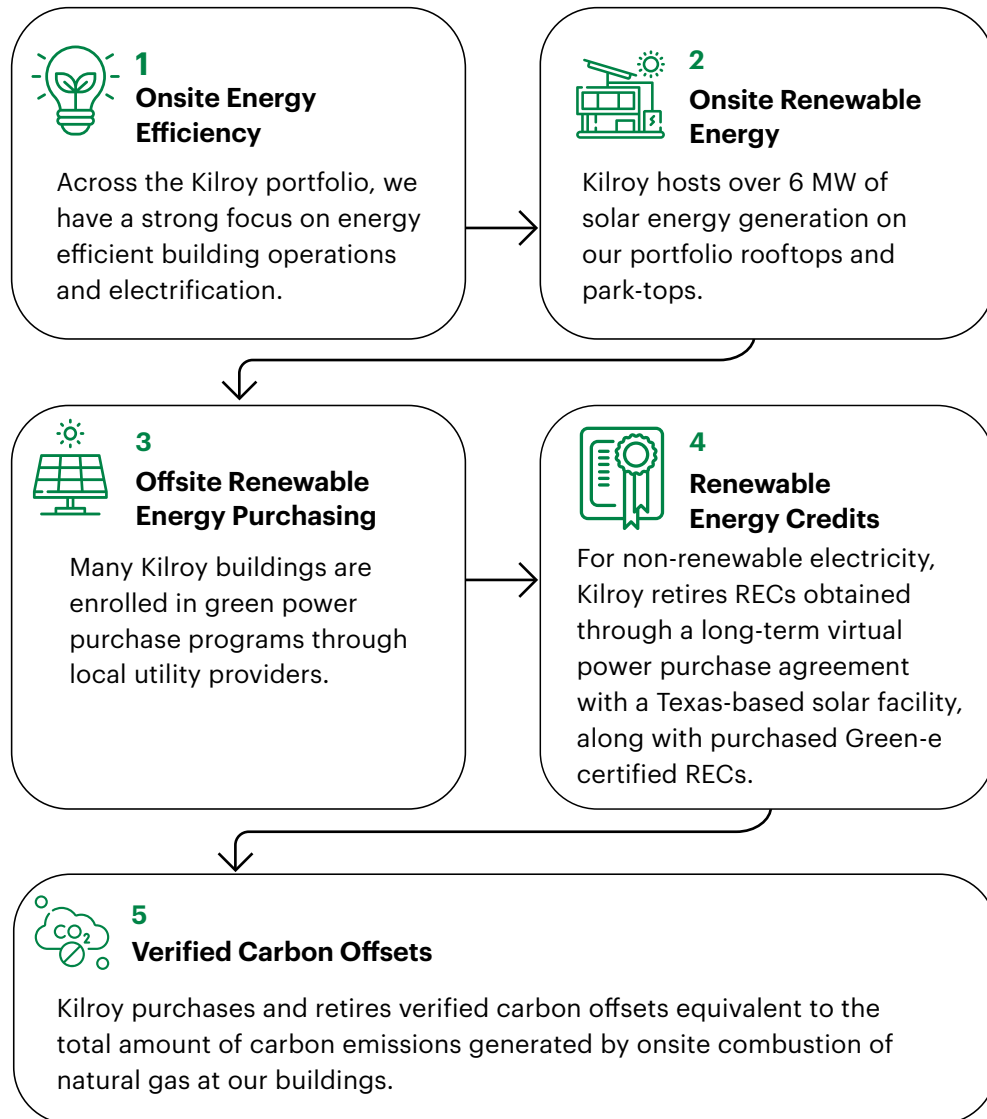
- 24 Convenient EV charging stations for building users
- 25 Nearby public transit for commuter ease
- 26 Bike storage, shower facilities, and lockers
- 27 Average portfolio Walk Score of about 70



For more details, see our Annual Sustainability Report visit:
www.kilroyrealty.com/Sustainability

Carbon Neutral Operations

The entire Kilroy portfolio has been operating on a carbon-neutral basis since 2020. This means that all greenhouse gas emissions associated with the operation of our buildings—specifically electricity and natural gas usage—have been measured and then reduced or offset to achieve a net-zero carbon footprint. We are proud of this accomplishment and our longstanding focus on sustainability in building design and operations.



Connect with Us

For more details, see our Annual Sustainability Report by visiting: www.kilroyrealty.com/sustainability
Questions or suggestions? Please reach out: sustainability@kilroyrealty.com
For leasing information, please visit our website: www.kilroyrealty.com

Hard copies of this brochure are printed on 100% post-consumer waste recycled paper, and use ink that is free from lead, phthalates, and materials subject to CA Proposition 65.

The information in this brochure is based on 2025 data.



2100 Kettner, San Diego, CA

Achievements & Accolades



Carbon Neutral Operations
2020-2025



ENERGY STAR
Partner of the Year, 2014-2024
Sustained Excellence, 2016-2024



GRESB
5-Star Designation for Standing Assets, 2015-2025
Regional Sector Leader in the Americas in
Technology/Life Science for Development, 2025



Green Lease Leaders
Leader, 2014-2025
Gold Level, 2018-2025
Champion of the Decade, 2024



NAREIT
Leader in the Light Award, Office Sector,
2014-2021, 2026



Best in Building Health
Fitwel Excellence Award, Most
Certifications of All-Time, 2019-2022
Greatest Number of Recertified Projects
of All-Time, 2026



Newsweek
America's Most Responsible Companies,
2020-2025



US EPA Green Power Partnership
National Top 100 Green Power Users,
2021-2024