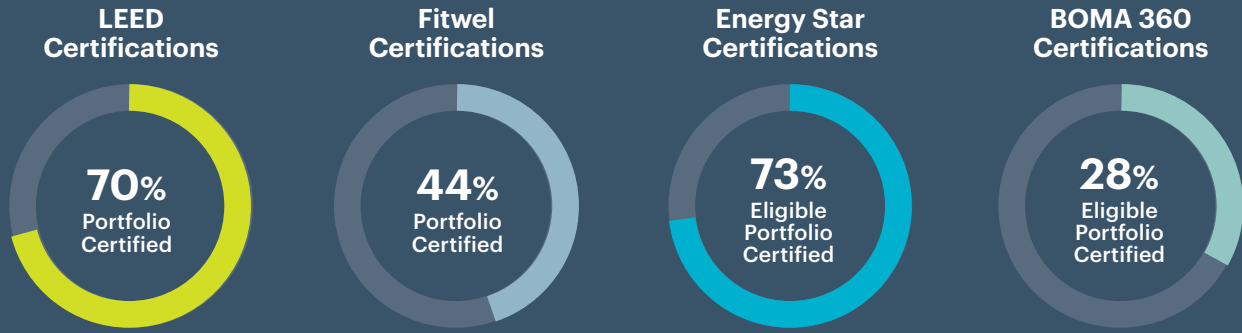


Sustainability at a Glance



Building Certifications



Diversity, Equity & Inclusion

At Kilroy we are committed to recruiting and developing a diverse workforce and promoting equity and inclusion. Our workforce has remained over 50% female and over 40% multicultural, a meaningful reflection of the diverse communities in which we operate. We will continue on this journey toward building a diverse, equitable, and inclusive workplace, cultivating a company culture that makes a positive difference in our employees' lives.



Community Engagement

Our employee volunteerism and philanthropy programs are a core element of our culture and have two fundamental areas of focus: Strong Communities and Healthy Planet. These concepts inspire the annual initiatives and actions we choose to undertake for our volunteer and philanthropic efforts. In the past several years, we have participated in volunteer events such as donation drives, beach cleanups, and assembling and distributing care packages.

Sustainable & Healthy Building Features

Kilroy uses a variety of building design and operational strategies to positively influence the environmental and social impacts of our portfolio. The following graphic highlights some of the strategies featured across our portfolio.

Energy & Carbon

- 1 Energy efficient lighting
- 2 On-site solar electricity generation
- 3 On-site battery storage
- 4 Energy efficient HVAC systems
- 5 All electric buildings to reduce fossil fuel consumption

Water

- 6 Drought tolerant landscaping and smart irrigation methods
- 7 Captured and reclaimed water used for irrigation
- 8 Low flow fixtures that reduce water consumption
- 9 Water leak detection

Waste

- 10 Waste diversion with recycling, compost, and e-waste

Biodiversity

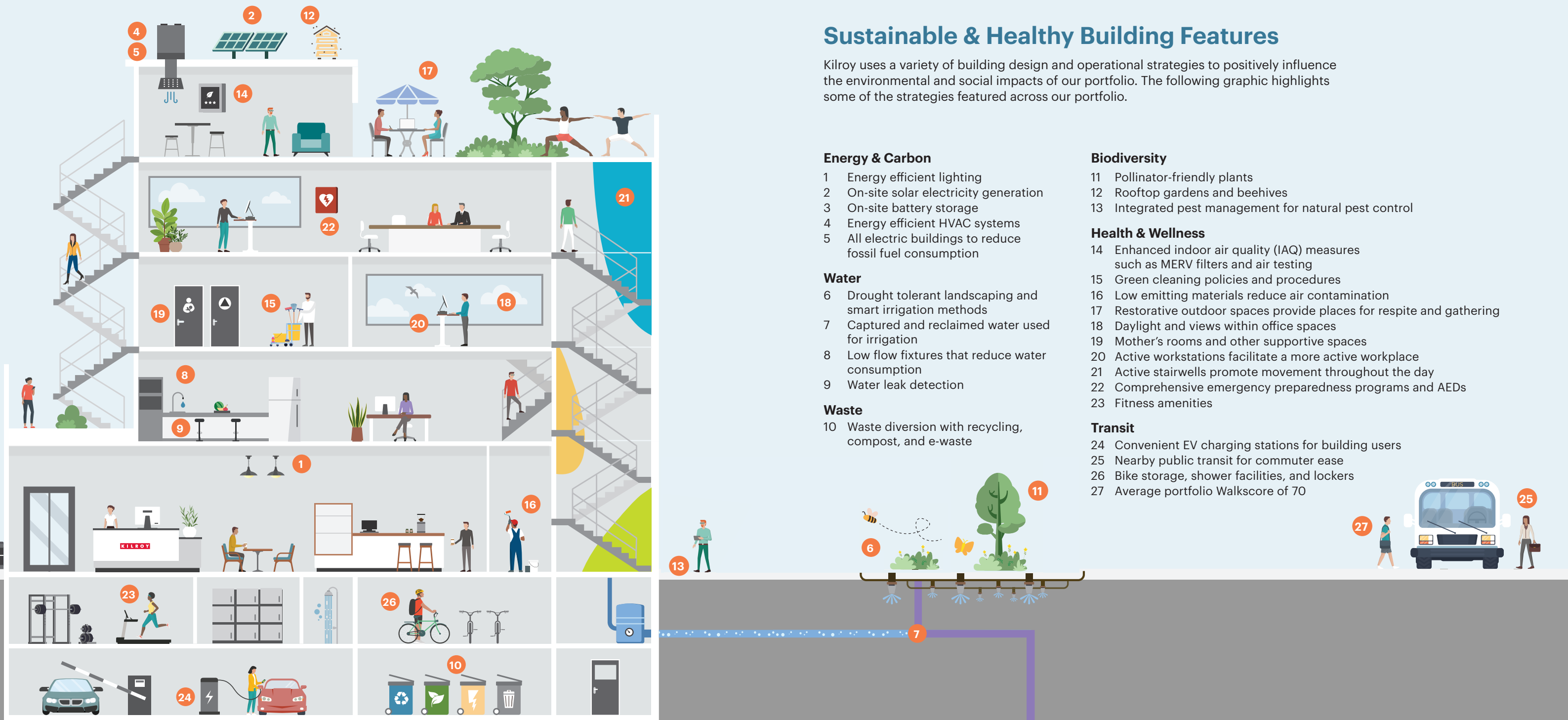
- 11 Pollinator-friendly plants
- 12 Rooftop gardens and beehives
- 13 Integrated pest management for natural pest control

Health & Wellness

- 14 Enhanced indoor air quality (IAQ) measures such as MERV filters and air testing
- 15 Green cleaning policies and procedures
- 16 Low emitting materials reduce air contamination
- 17 Restorative outdoor spaces provide places for respite and gathering
- 18 Daylight and views within office spaces
- 19 Mother's rooms and other supportive spaces
- 20 Active workstations facilitate a more active workplace
- 21 Active stairwells promote movement throughout the day
- 22 Comprehensive emergency preparedness programs and AEDs
- 23 Fitness amenities

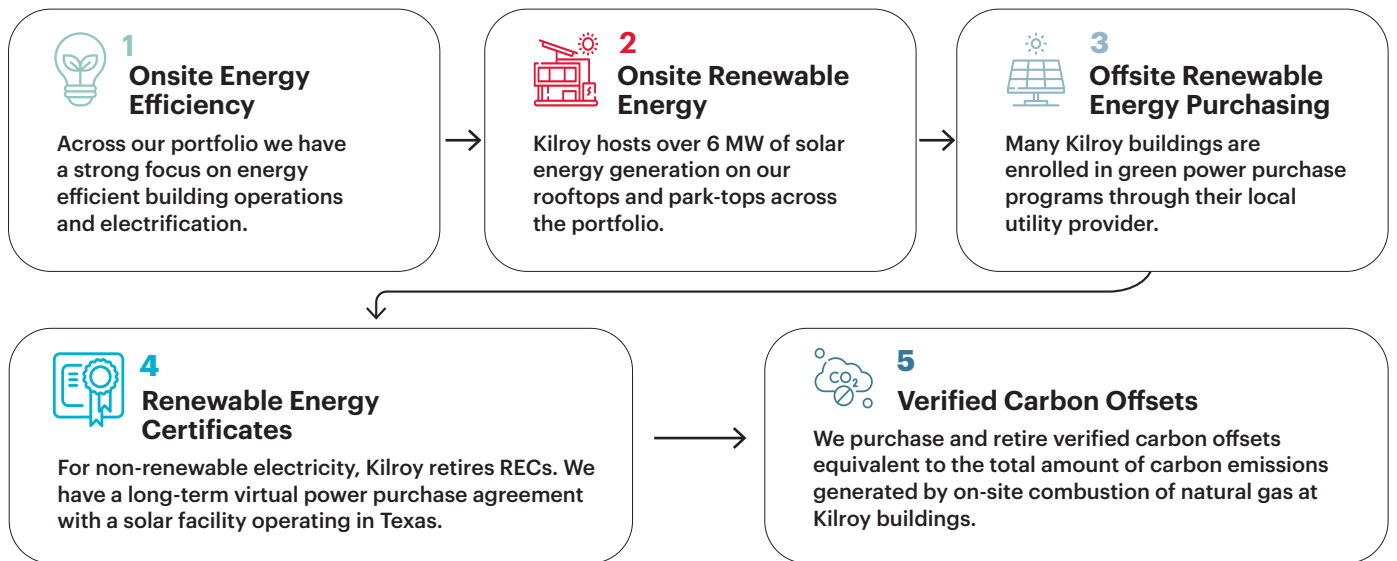
Transit

- 24 Convenient EV charging stations for building users
- 25 Nearby public transit for commuter ease
- 26 Bike storage, shower facilities, and lockers
- 27 Average portfolio Walkscore of 70



Carbon Neutral Operations

Did you know that the entire Kilroy portfolio has been operating on a carbon-neutral basis since 2020? We are proud of this accomplishment and our longstanding focus on sustainability in building design and operations. We focus on the following strategies to achieve carbon neutral operations:



Achievements & Accolades



Carbon Neutral Operations
Kilroy achieved Carbon Neutral Operations, 2020-2023



Energy Star
Partner of the Year, 2014-2023
Sustained Excellence, 2016-2023



GRESB
#1 in Development (Diversified),
Regional Sector Leader for Americas, 2022-2023
5-Star Rating, 2015-2023



Green Lease Leaders
Leader, 2014-2023
Gold Level, 2018-2023



Bloomberg Gender-Equality Index
Member, 2020-2023



Newsweek
America's Most Responsible Companies,
2020-2023



Best in Building Health
Fitwel Excellence Award,
Most Certifications of All Time, 2019-2022



S&P Sustainability Yearbook
Member, 2018-2023



US EPA Green Power Partnership
Member of National Top 100
Green Power Users, 2021-2023

Connect with Us

For more details, see our Annual Sustainability Report by visiting: www.kilroyrealty.com/sustainability
Questions or suggestions? Please reach out: sustainability@kilroyrealty.com
For leasing information, please visit our website: www.kilroyrealty.com

Hard copies of this brochure are printed on 100% post-consumer waste recycled paper, and use ink that is free from lead, phthalates, and materials subject to CA Proposition 65.

The information in this brochure is based on 2023 data.

